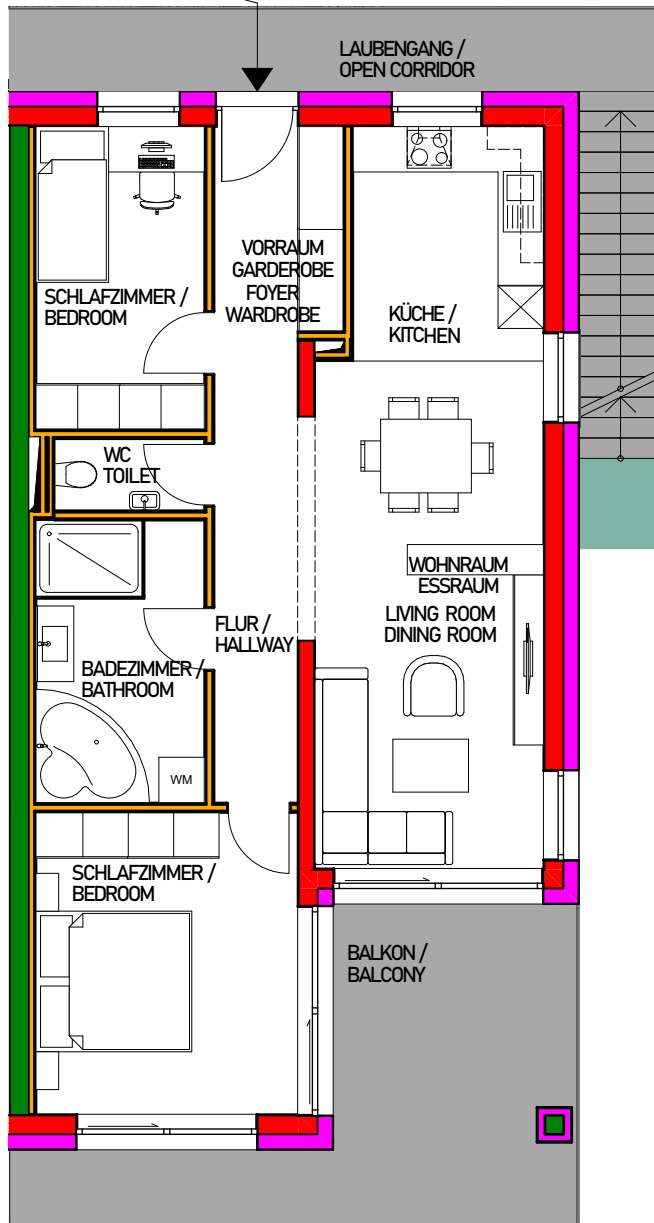


WIENERSTRASSE 9, A-7082 DONNERSKIRCHEN
ÜBERSICHTSPLAN
HAUS 0.2
TOP 0.2 - 1.OBERGESCHOSS

LAYOUT
HOUSE 0.2
APARTMENT 0.2 - SECOND FLOOR

ZUGANG / ENTRANCE
 HAUS 0.2 / HOUSE 0.2
 TOP 0.2 / APARTMENT 0.2



**HOUSE 2 -
 APARTMENT 0.2**
 ca. 73 m²
BALCONY
 ca. 18 m²
ENTRANCE
 ca. 19 m²
PARKING LOT 1
 ca. 16 m²
PARKING LOT 2
 ca. 16 m²

ZUGANG / ENTRANCE
 HAUS 0.2 / HOUSE 0.2
 TOP 0.2 / APARTMENT 0.2

HAUS 0.2 - TOP 0.2
 ca. 73 m²
BALKON
 ca. 18 m²
ZUGANG
 ca. 19 m²
PARKPLATZ 1
 ca. 16 m²
PARKPLATZ 2
 ca. 16 m²



Terra Atlas

IMMOBILIEN GMBH